

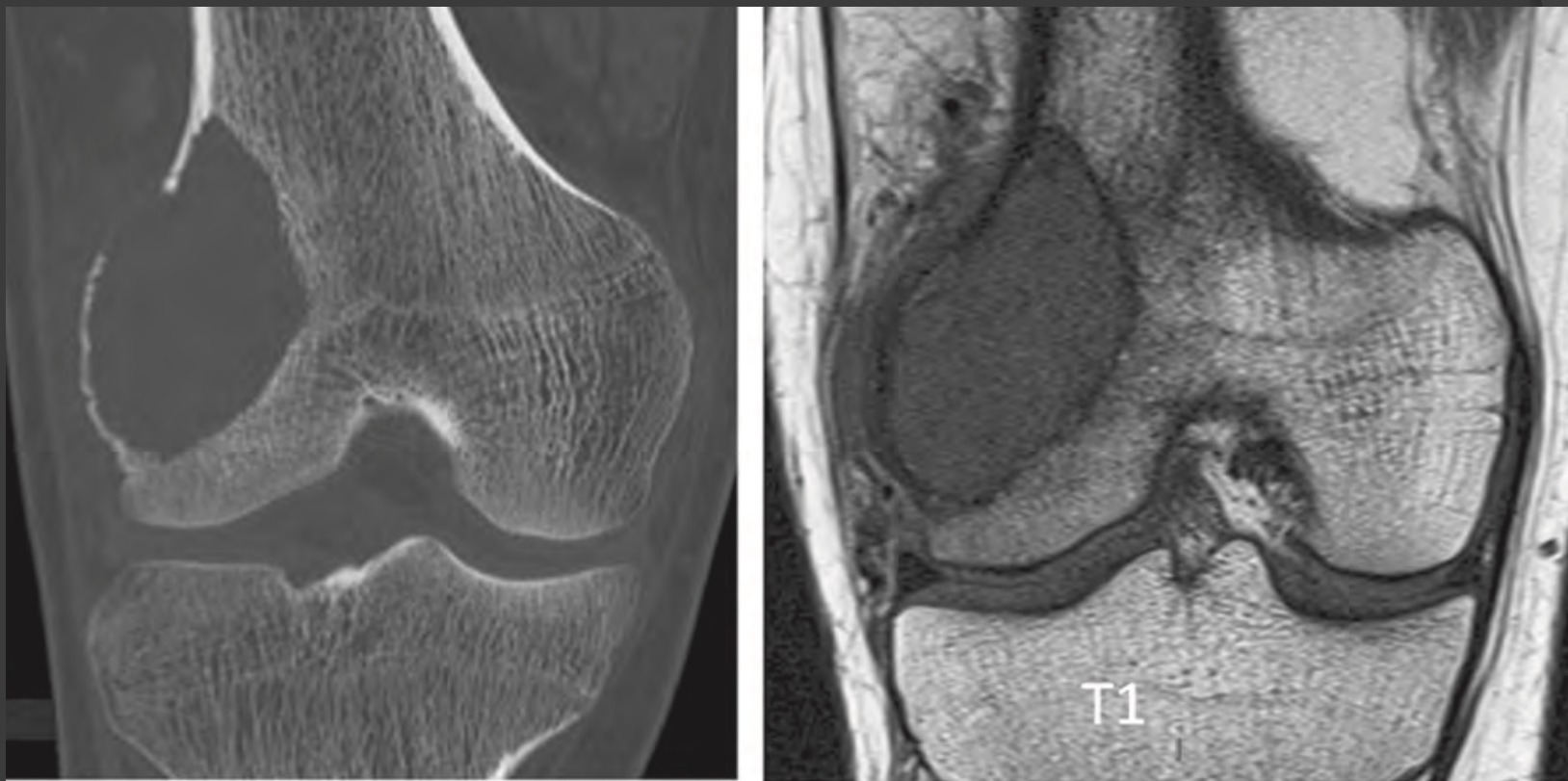
Quizz Savoir-Faire 2025

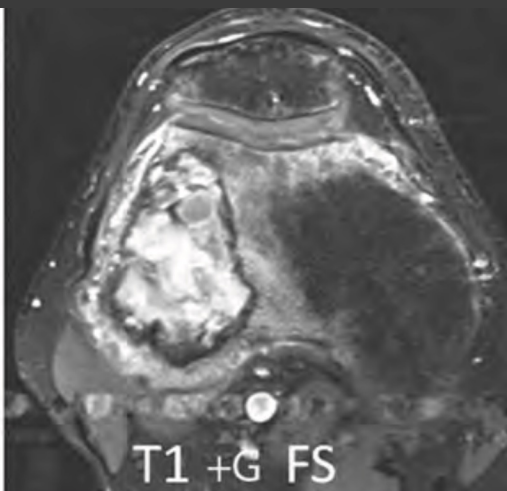
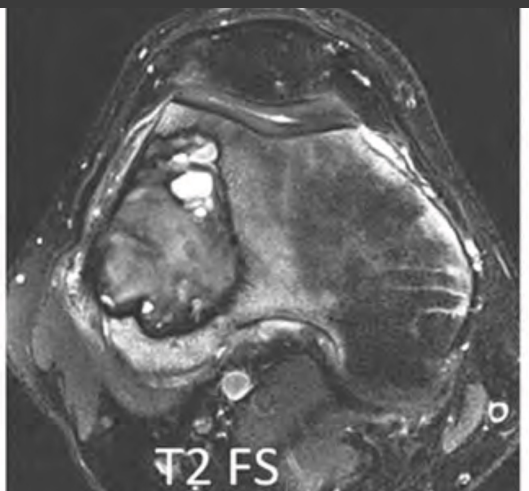
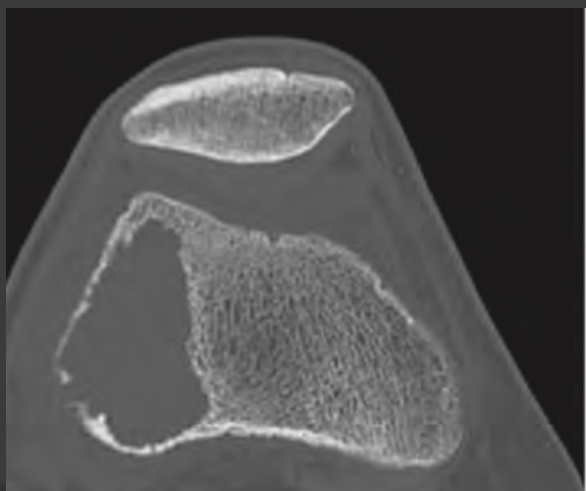
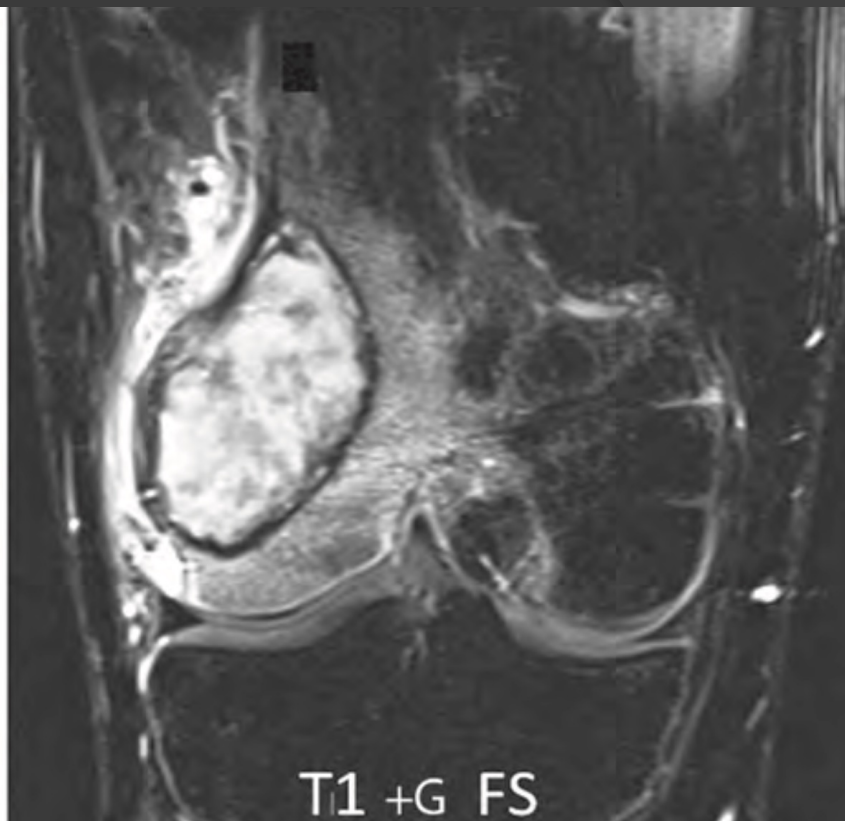
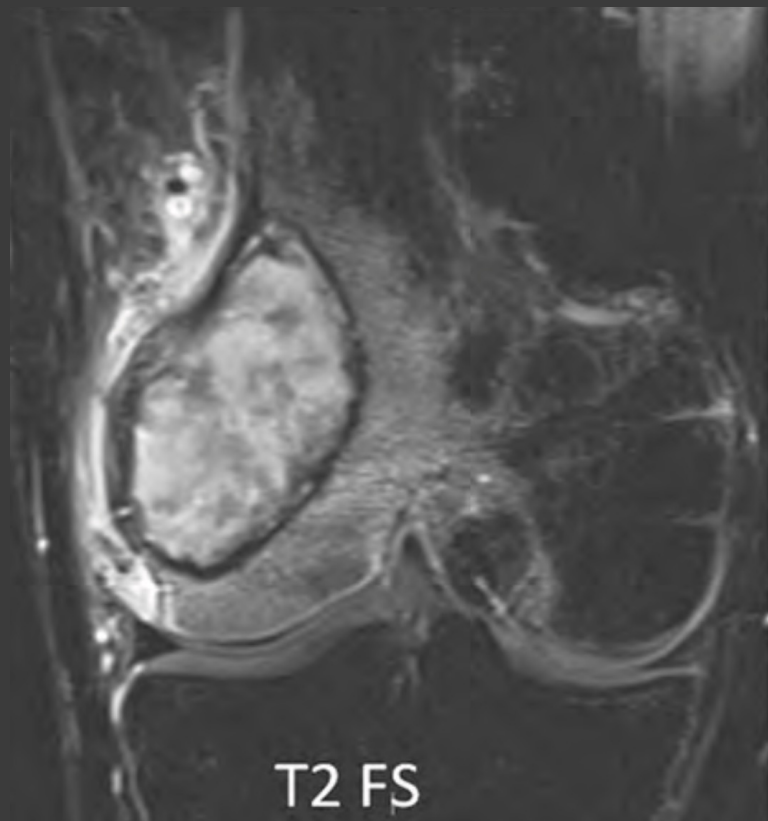
Jean-Denis Laredo

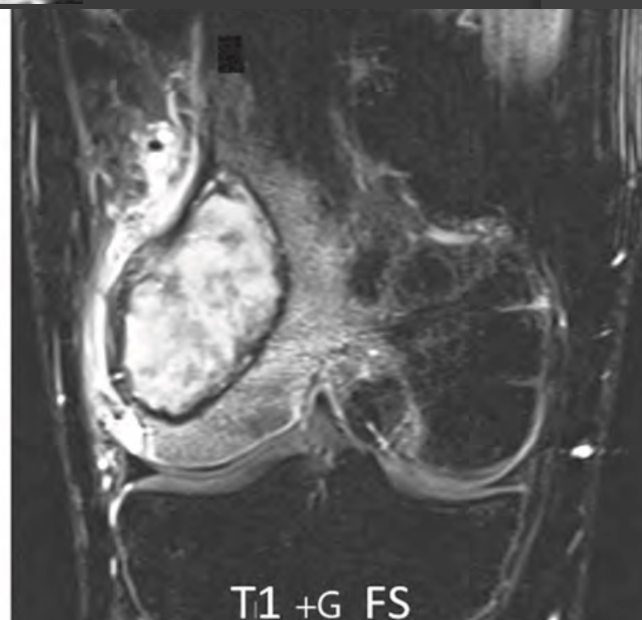
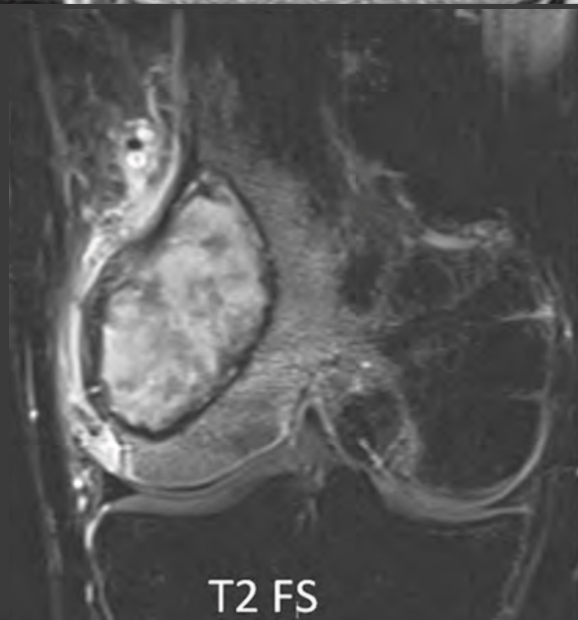
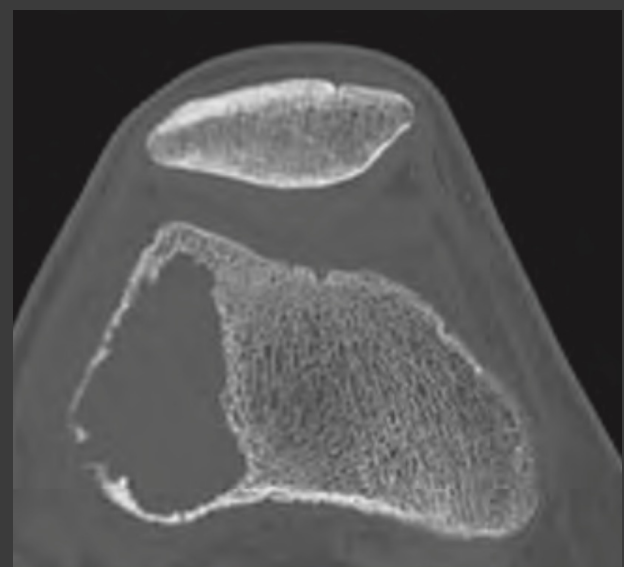
Part 1 : cas 1 à 5

Lacunes osseuses épiphysaires

Cas 1





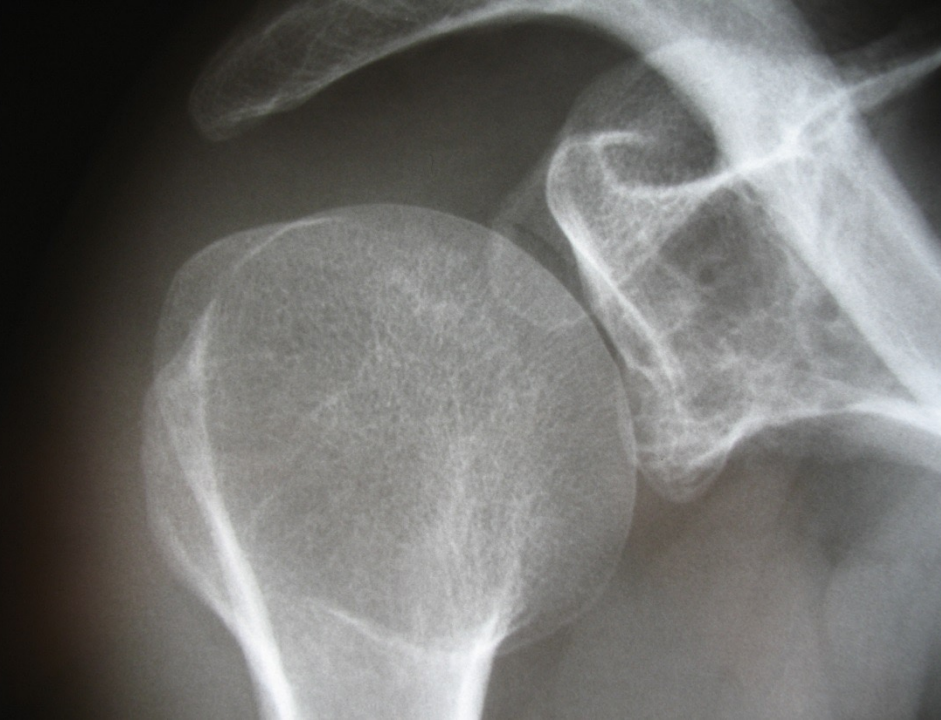


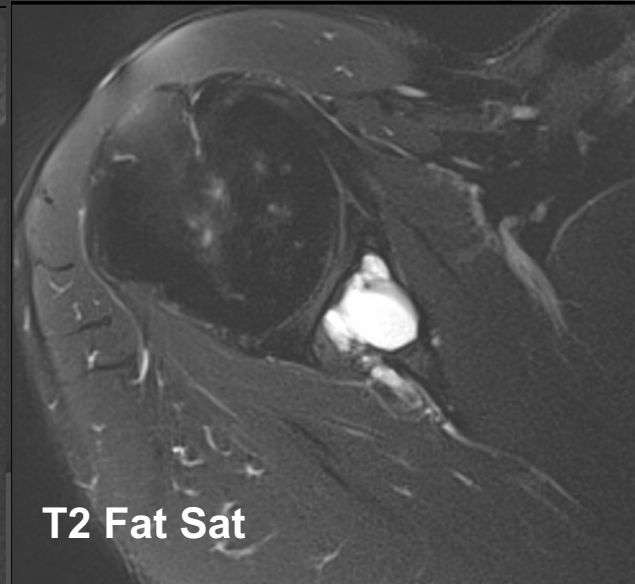
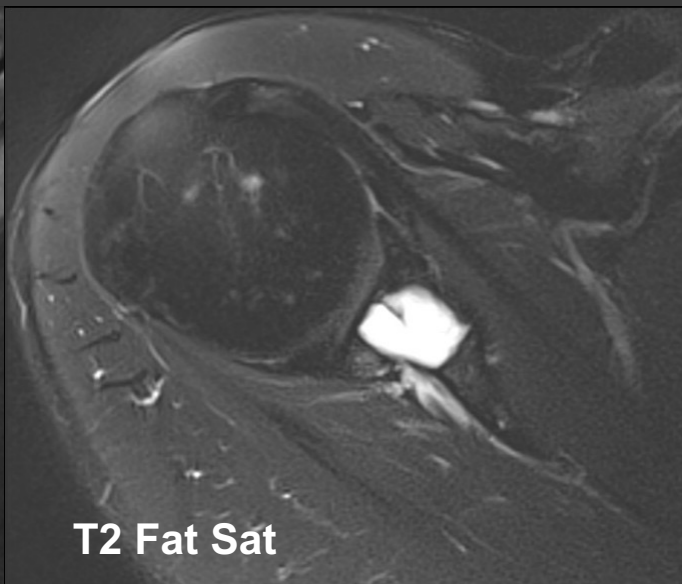
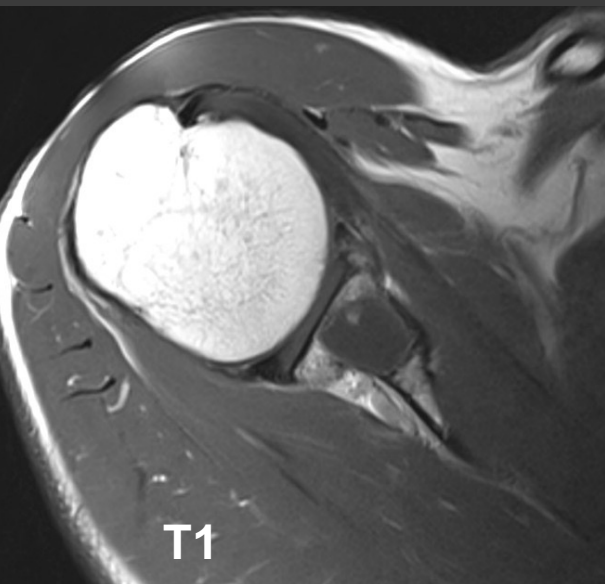
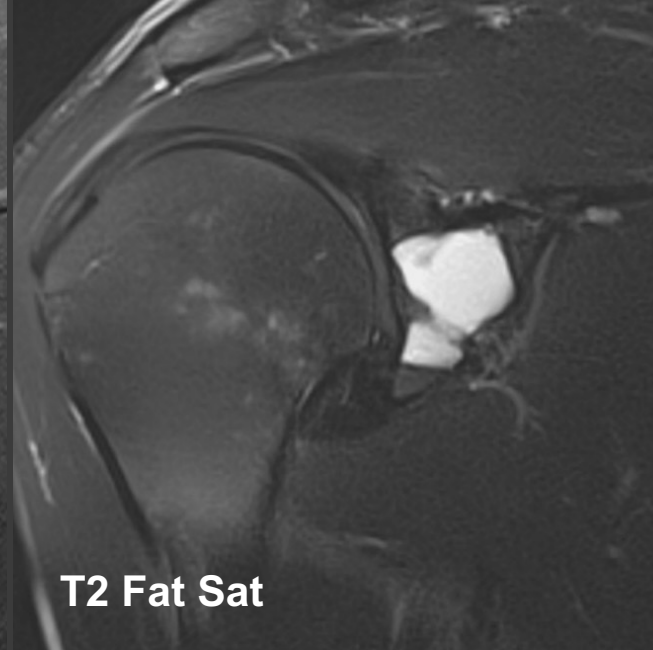
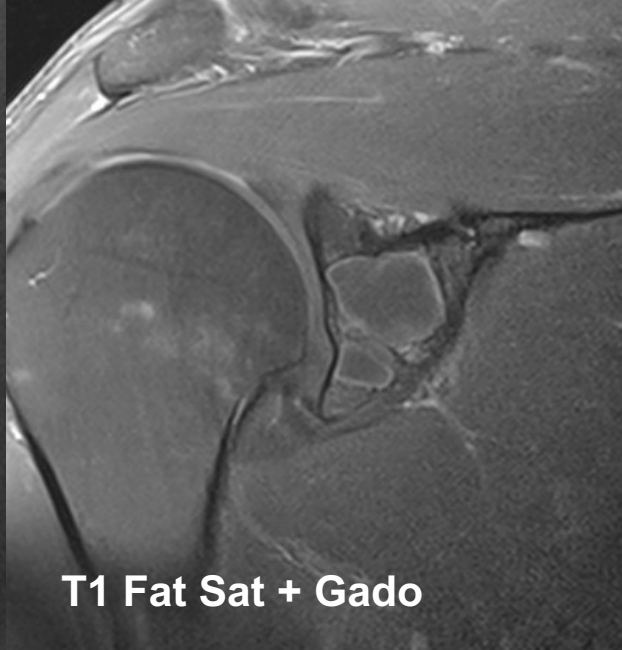
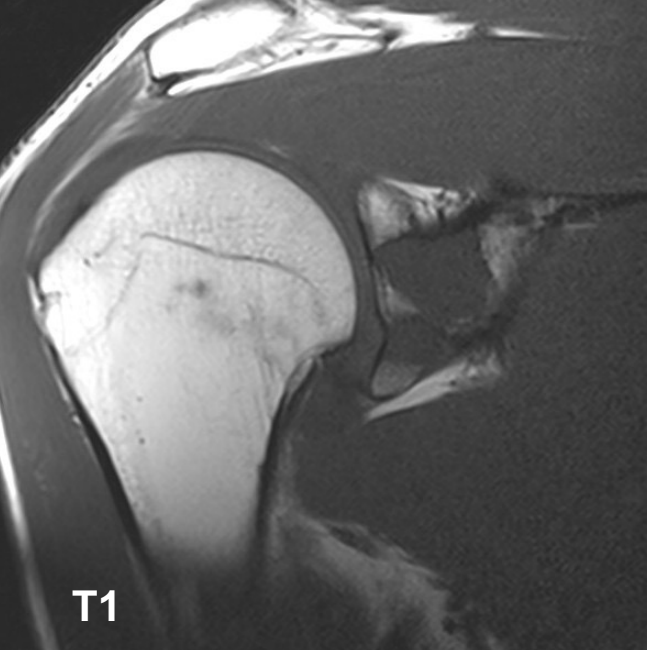
Cas 1



Cas 2

- ⦿ Femme de 51 ans
- ⦿ Douleur en abduction



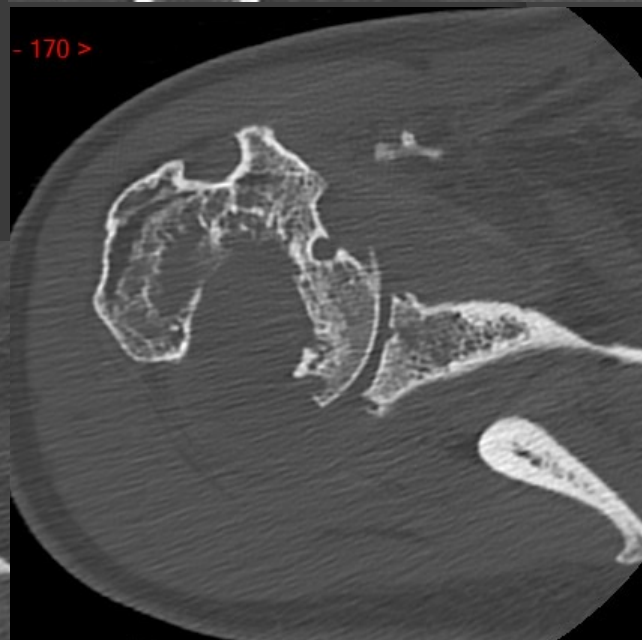
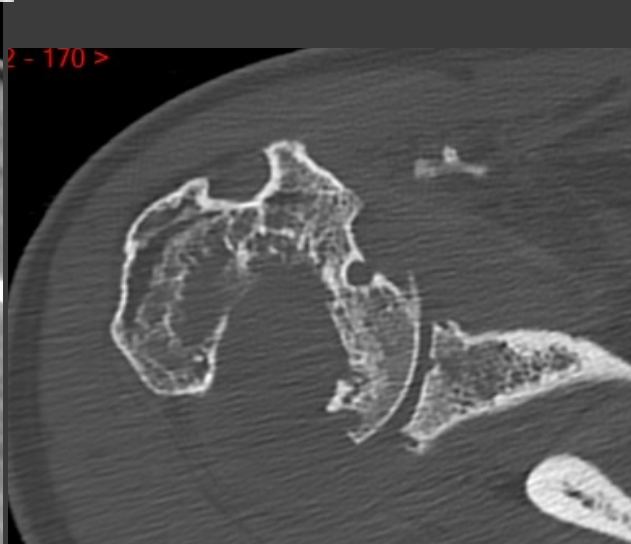
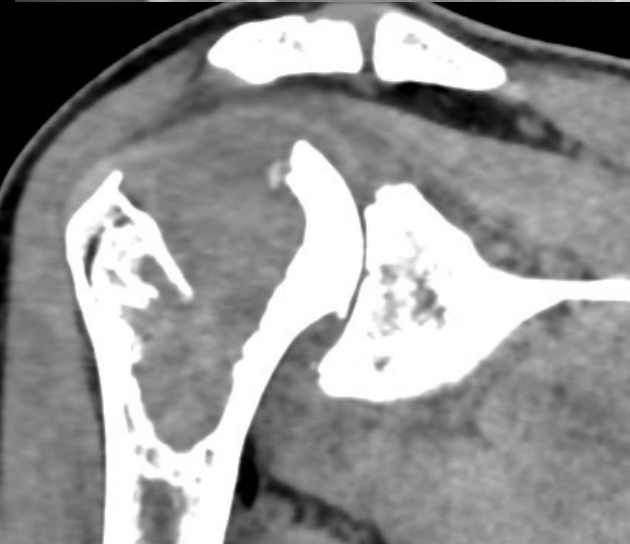
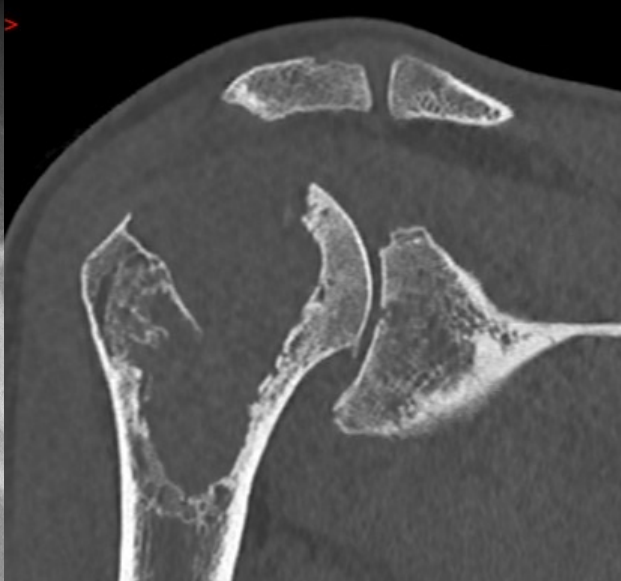


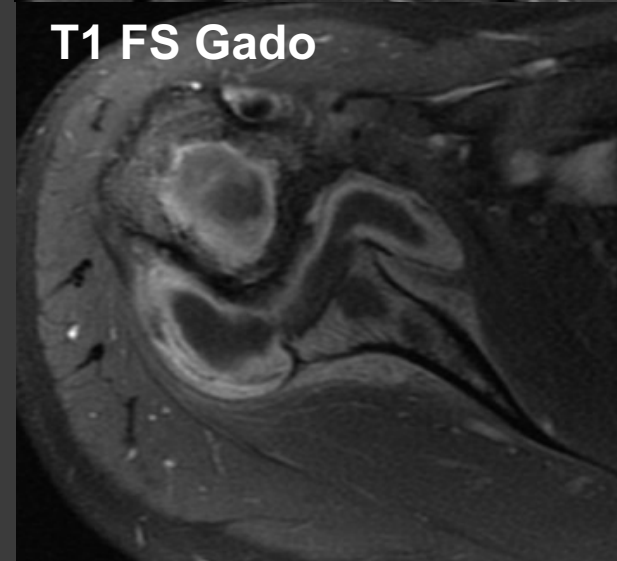
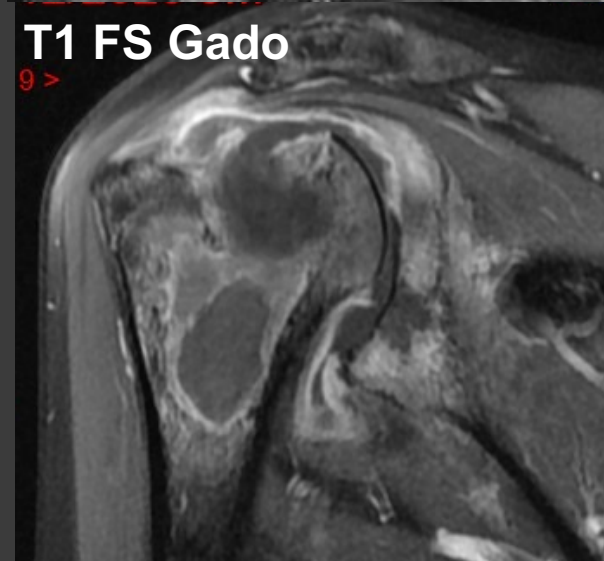
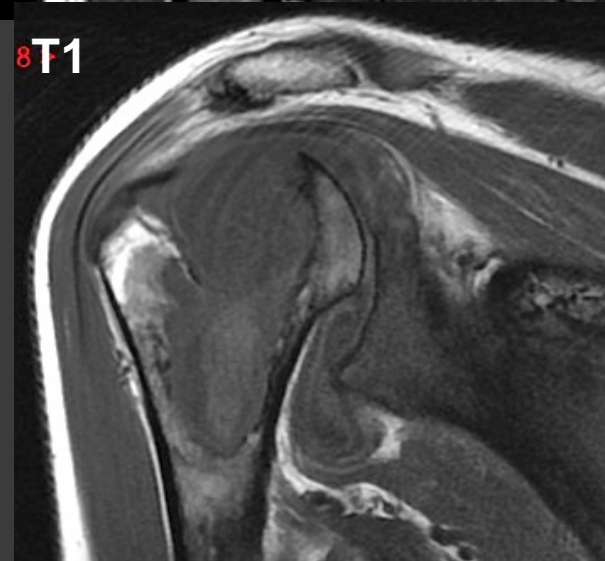
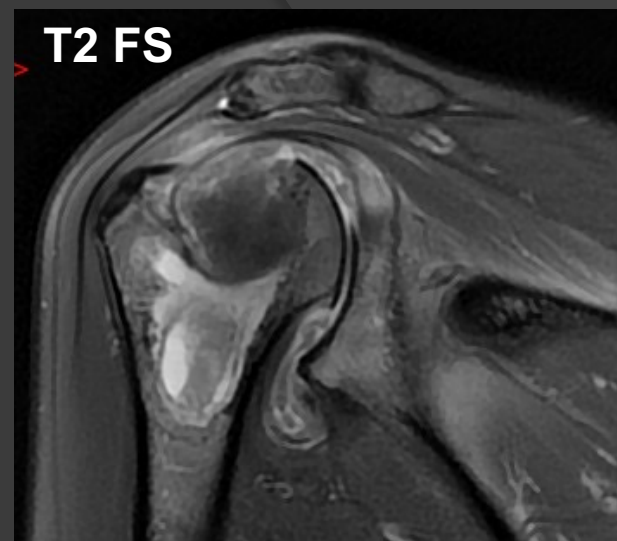
Cas 2



Cas 3

- ⦿ Femme de 22 ans
- ⦿ Douleurs de l'épaule depuis plusieurs mois d'intensité croissante



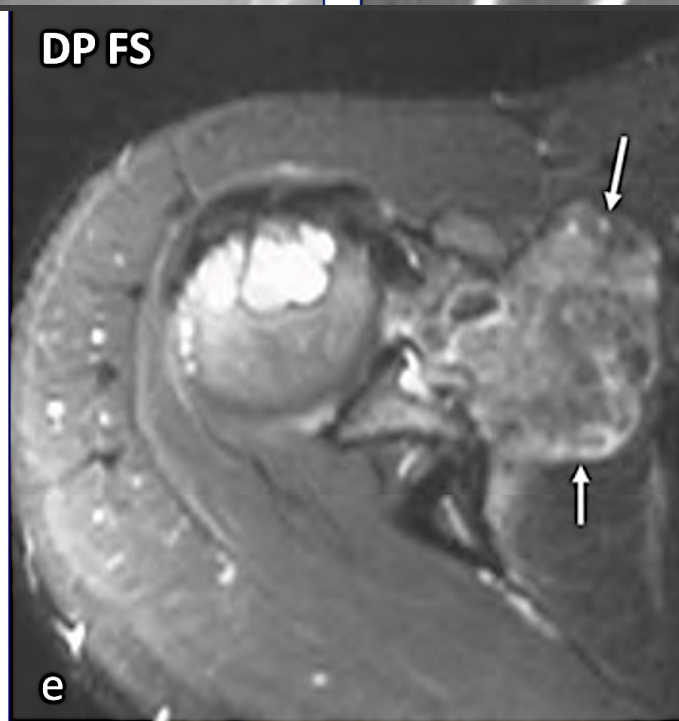


Cas 3



Cas 4

- ⦿ Femme de 32 ans
- ⦿ Gène modérée de l'épaule surtout après le sport et les activités manuelles.

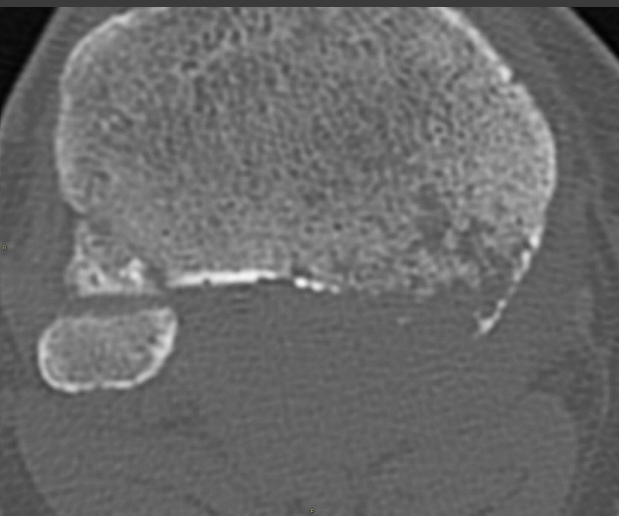


Cas 4



Cas 5

- ⦿ Homme de 42 ans, livreur dans la restauration
- ⦿ Douleur intense du genou droit



Cas 5



Quizz SF 2025

Jean-Denis Laredo

Part 2 : cas 6 à 10

Autres lacunes osseuses

Cas 6

fracture chez un jeune homme de 18ans.

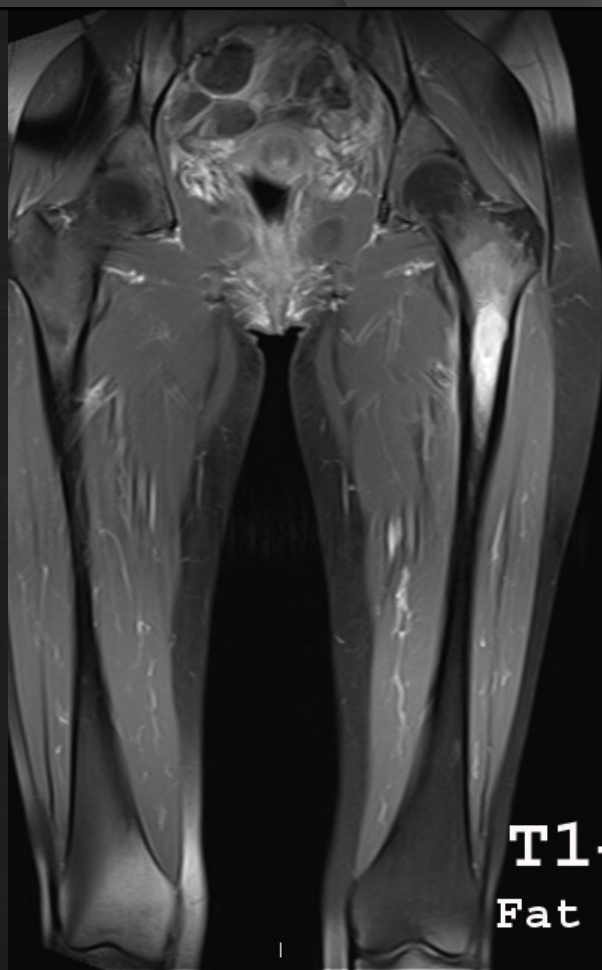




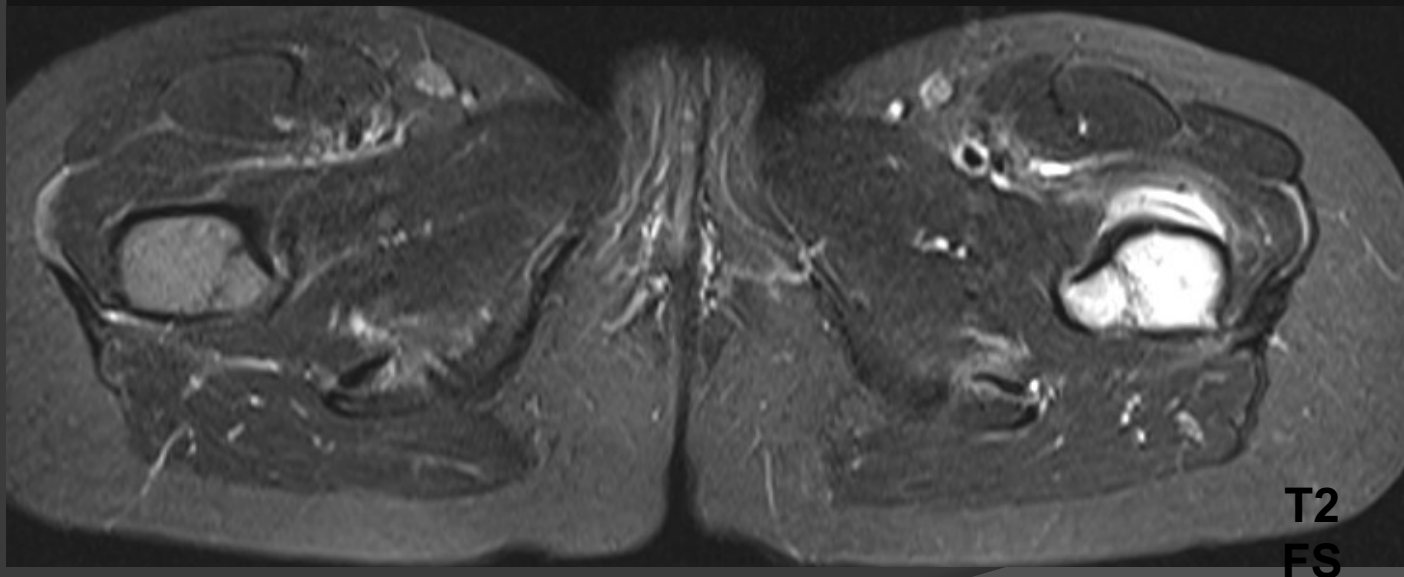
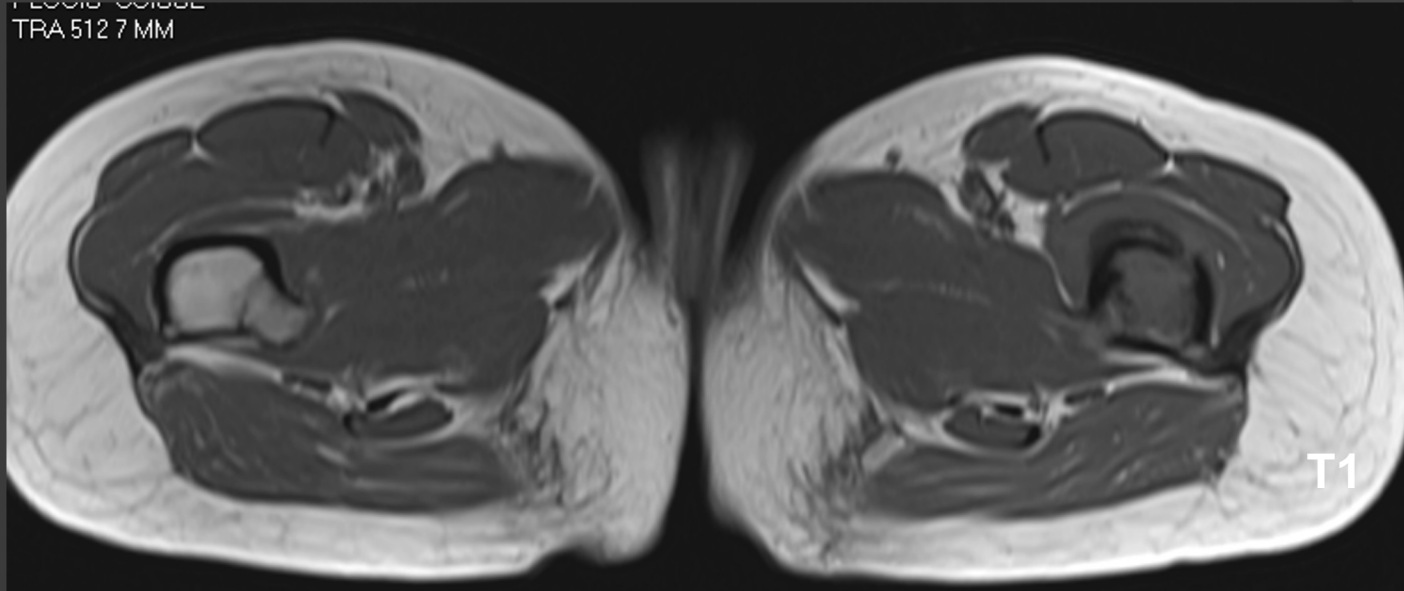


Cas 7

- ⦿ Homme de 50 ans
- ⦿ Douleur de cuisse G d'horaire inflammatoire



PELVIS CORSE
TRA 512.7 MM

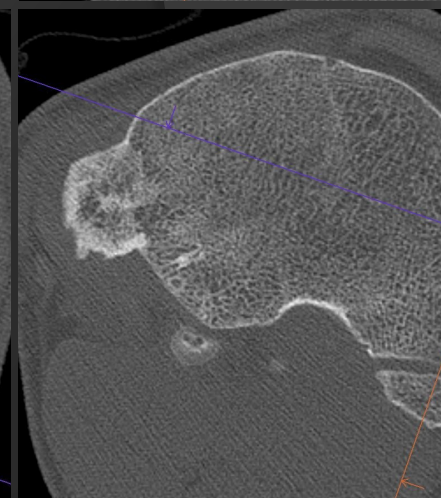
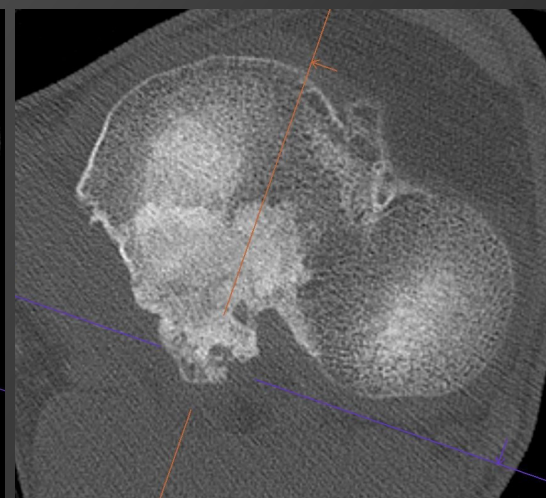
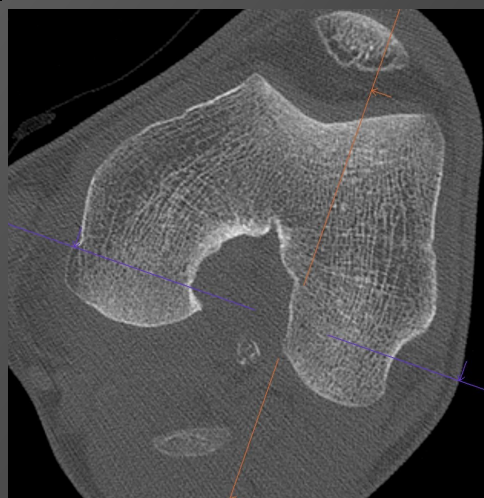
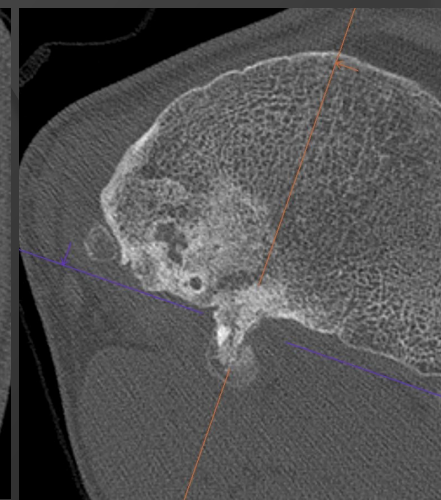
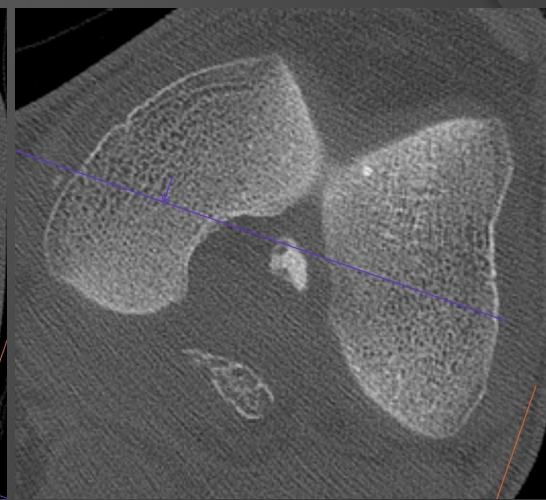
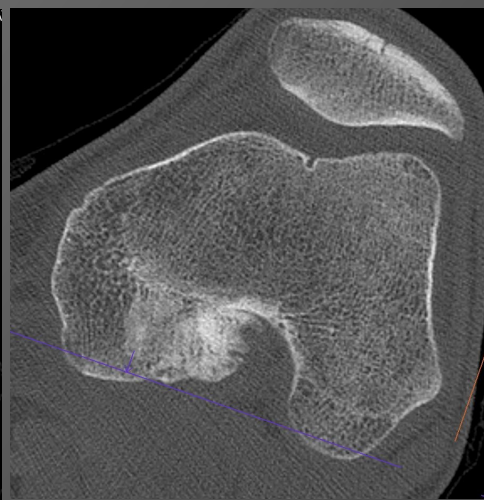
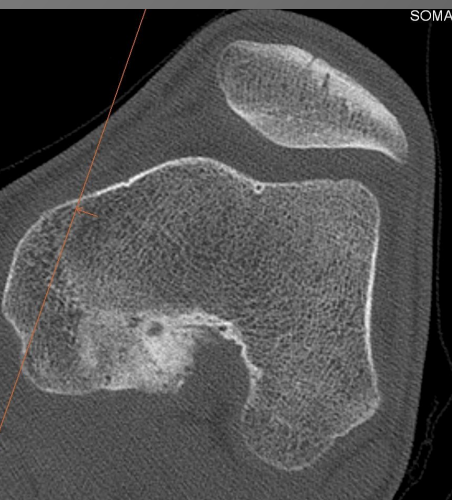


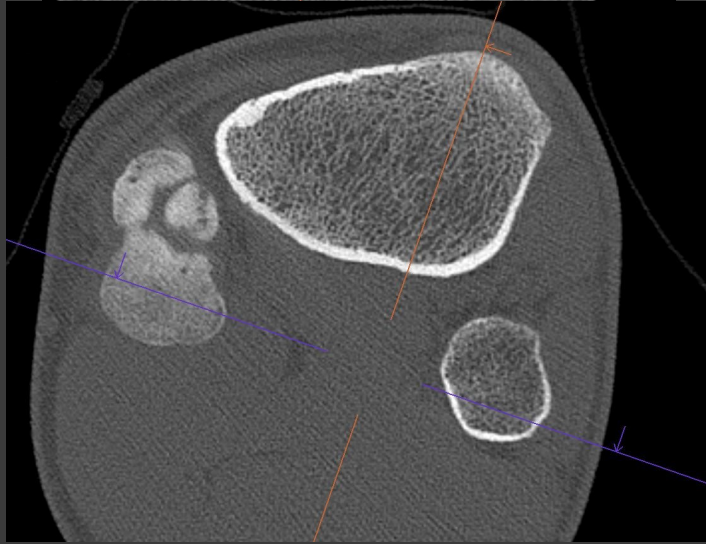
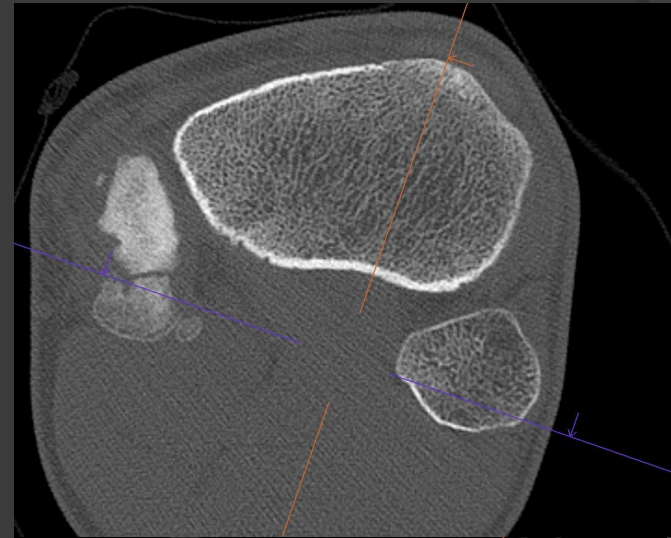
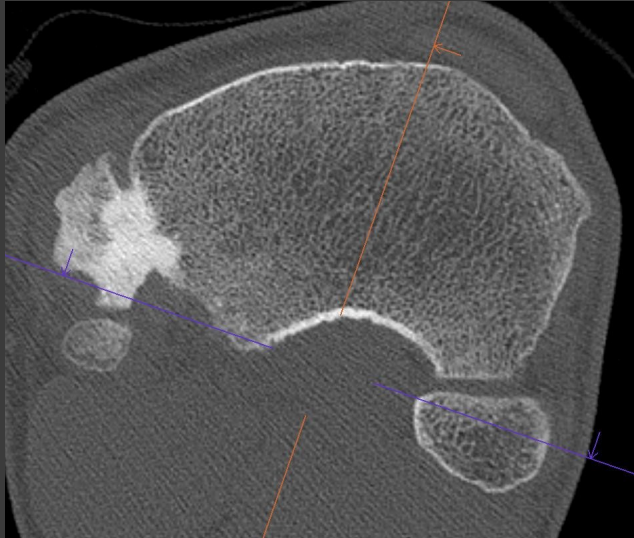


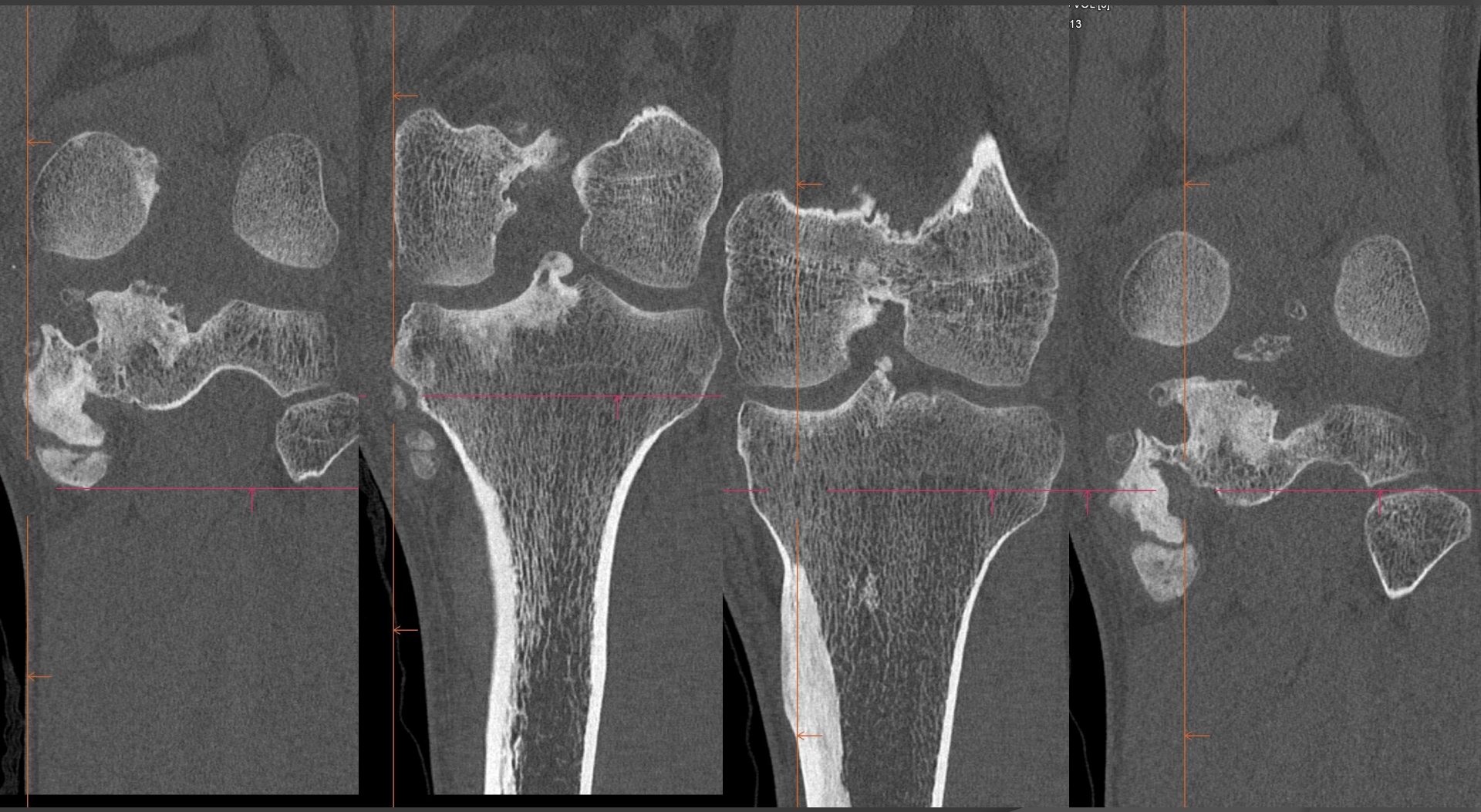
Cas 8

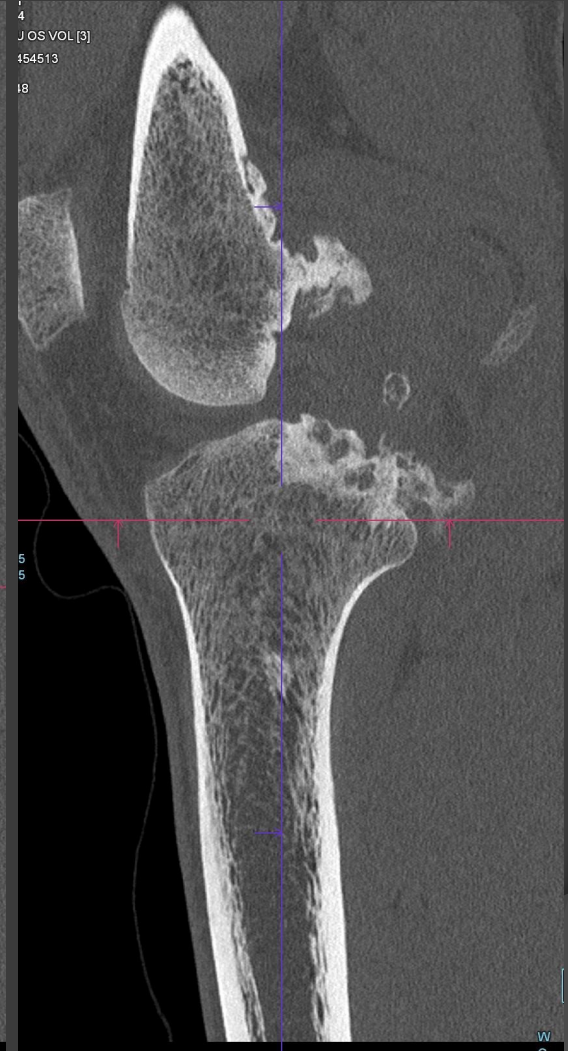
- ⦿ 22 ans.
- ⦿ Aucun antécédent.
- ⦿ Douleur postérieure dans les suites d'un traumatisme en escalade de mécanisme inconnu il y a un mois. Persistance d'un fond douloureux notamment lors de la pratique sportive.



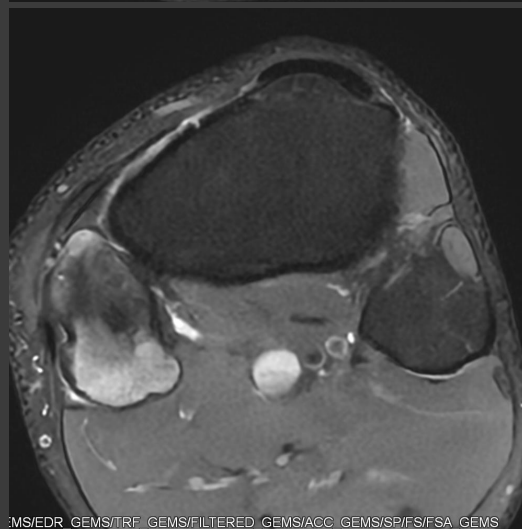
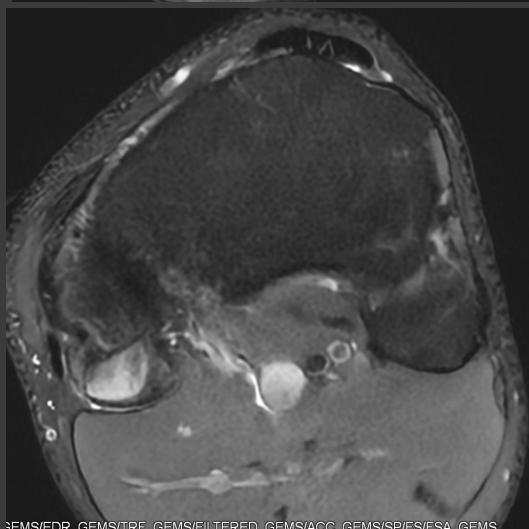
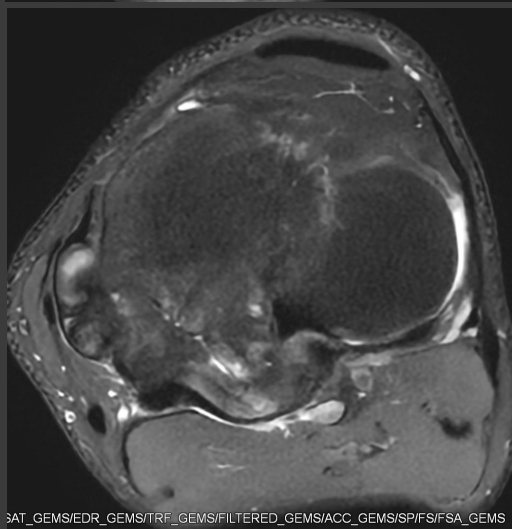
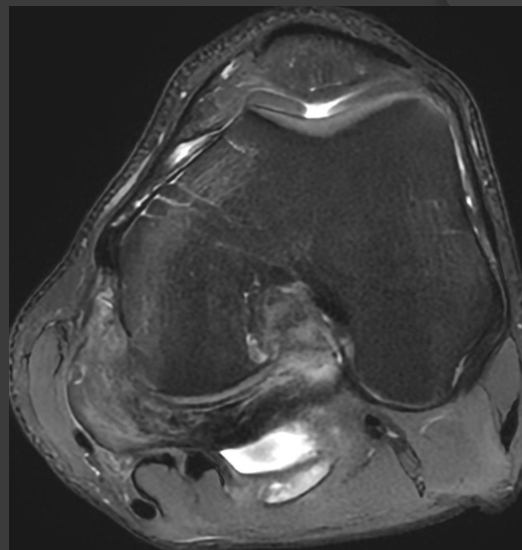
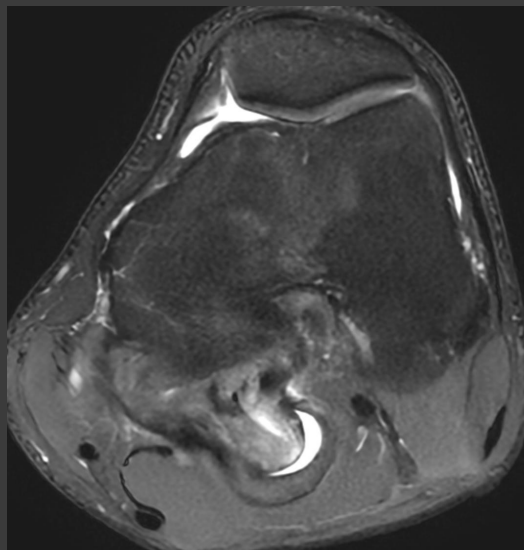
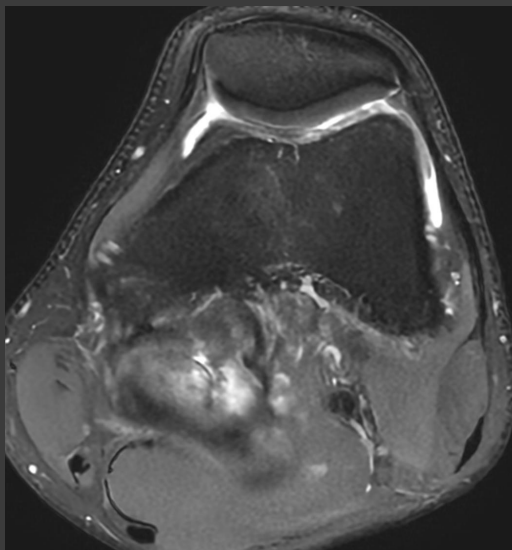












3AT_GEMS/EDR_GEMS/TRF_GEMS/FILTERED_GEMS/ACC_GEMS/SP/FS/FSA_GEMS

3FMS/FDR_GEMS/TRF_GEMS/FILTERED_GEMS/ACC_GEMS/SP/FS/FSA_GEMS

3MS/EDR_GEMS/TRF_GEMS/FILTERED_GEMS/ACC_GEMS/SP/FS/FSA_GEMS



Cas 9

- ⦿ Découverte chez un homme de 67 ans, d'une image de T7 sur un scanner fait pour des lombalgies.

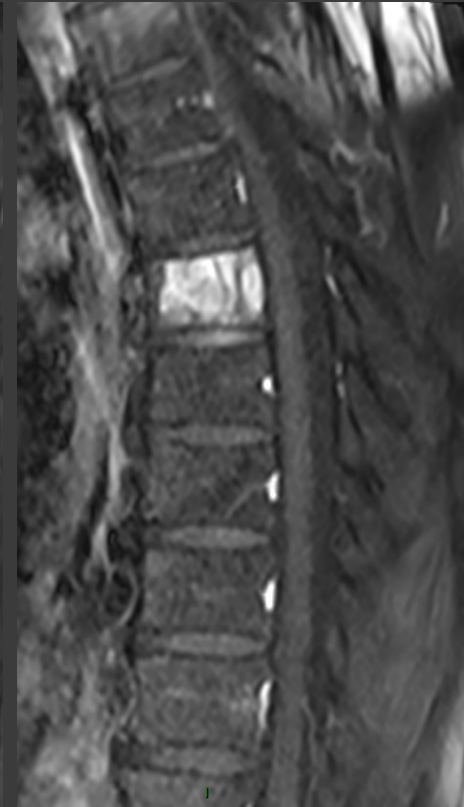
Image de T7 chez un homme de 67 ans



Image de T7 chez un homme de 67 ans



T1
T1 + G FS

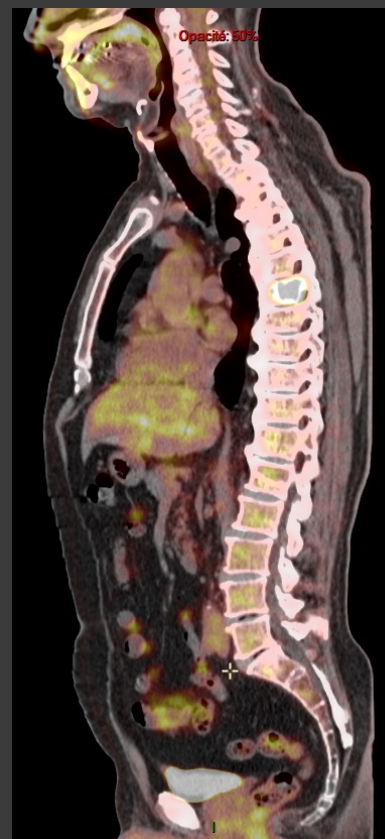


T2 FS

Image de T7 chez un homme de 67 ans



T2 FS
PET-scan



PET-18 FDG



Cas 10

Patiente de 19 ans

- Acné sévère depuis l'âge de 12 ans
- Episodes itératifs de diarrhée aigue ; Crohn évoqué, non confirmé
- Spondylarthrite en à 15 ans devant des arthralgies inflammatoires, HLA B27+.
- ATCD de spondylarthrite chez la mère et la sœur ainé

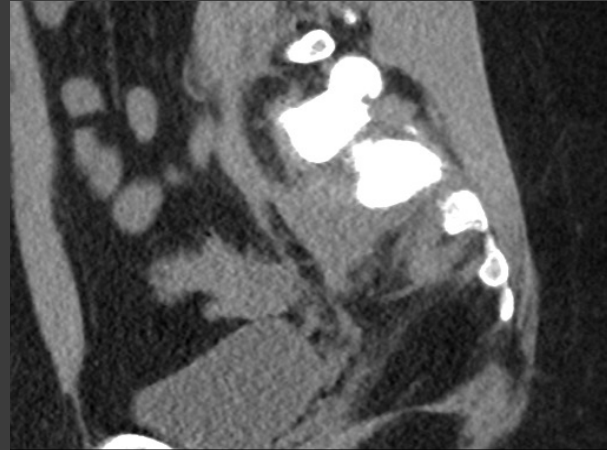
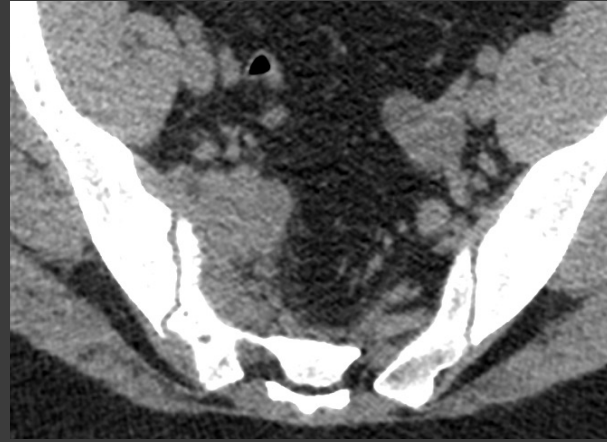
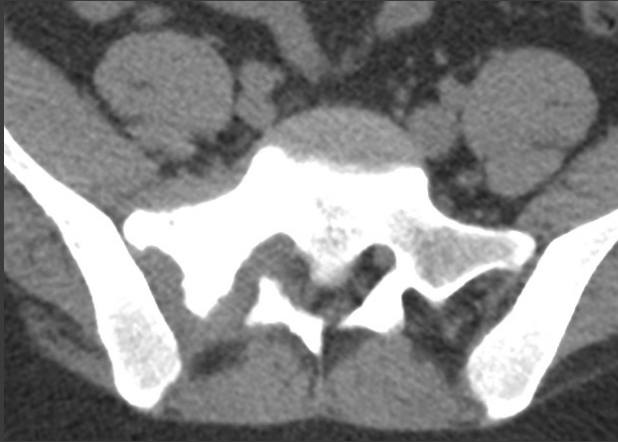
Consulte pour des lombalgies, une fessalgie droite et une douleur de l'épaule gauche d'horaire inflammatoire évoluant depuis 2 mois. Bon état général.

Biologie : CRP 11 mg/L, calcémie corrigée 2.40 mmol/L, EPP normale.

Scanner coupes osseuses



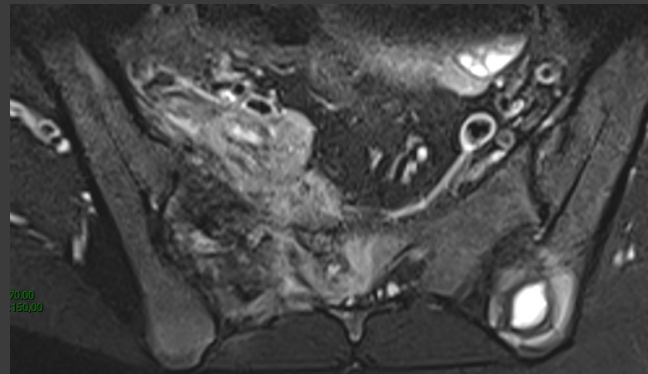
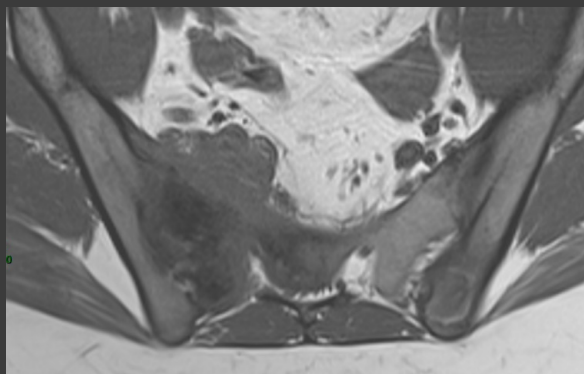
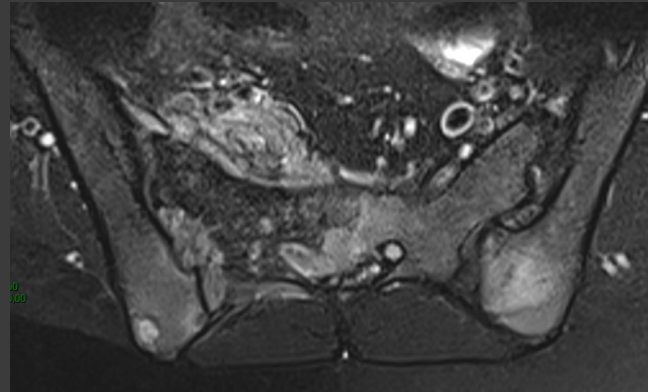
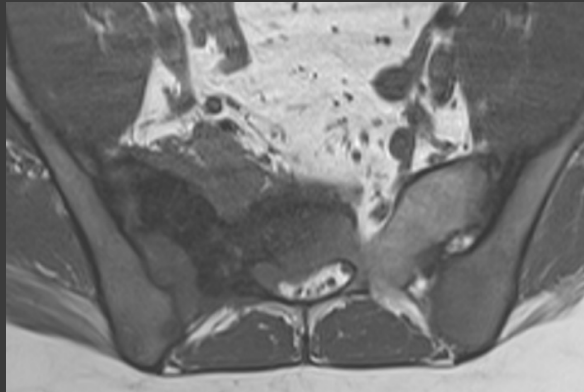
Scanner coupes parties molles



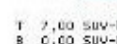
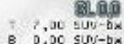
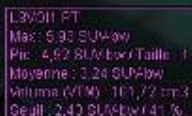
Coupe coronale T1 et T2 STIR



Coupe axiale T1 et T1 gadolinium



LA PITE SULFATÉE





A vous de jouer

...et au plaisir de se retrouver le
jeudi 18 septembre au Savoir-Faire